

Features

- Universal input 90-264V AC
- Interchangeable Power Supply
- Approved to UKCA, CE, cULus, RCM (C-Tick), TUV-GS, FCC, RoHS
- UL/EN 60950-1 Safety Approved
- Meets Efficiency Level VI
- Single Output 9V DC
- OVP, OCP, OTP, SCP



Ideal Power's 25HK-AB-xAz-CP 22.5W AC/DC External Adapter Interchangeable Power Supply (PSU) Series are certified to UKCA, CE, cULus, RCM (C-Tick), TUV-GS, FCC, RoHS & EN 60950-1/UL 60950-1 Standards and comply with (EU) 2019/1782, Level V Efficiency Regulations. These are primarily used in ITE, Audio & Video Industries and customised solutions are available upon request.

Models

Model Number	Output Voltage (V DC)	Output Current (A)	Output Power (W)	Efficiency (%)
25HK-AB-090A250-CP	9	2.5	22.5	81.81

Input Data

	Min	Typical	Max	Units	Notes
Input Voltage	90	--	264	V AC	100-240VAC +/- 10%
Input Frequency	47	--	63	Hz	50-60Hz +/- 5%
Input Current	--	--	0.8	A	
Inrush Current	0	--	50	A	At cold start, 100 / 240V AC
Leakage Current	--	--	0.25	mA	

Output Data

	Min	Typical	Max	Units	Notes
Output Voltage Range	8.55	--	9.45	V	
Ripple & Noise	--	--	120	mVp-p	Model dependant
Line Regulation	--	2	--	%	
Hold up Time	1	--	--	ms	At 110V ac Full load
Turn on Time	--	--	2	s	At 110V ac Full load

Protection

Input Current Protection	Will recover if fault condition is removed
Output Current Protection	Will recover if fault condition is removed
Short Circuit Protection	Will recover if fault condition is removed

Environmental Data

	Min	Typical	Max	Units	Notes
Operating Temperature	0	--	+40	°C	
Storage Temperature	-20	--	+70	°C	
Operating Humidity	10	--	95	°C	
Operating Humidity	10	--	95	°C	

Other Information

	Min	Typical	Max	Units	Notes
Insulation Resistance	--	--	--	--	Primary to secondary: 50M OHM to 500VDC.
MTBF	--	50,000	--	hrs	
Dimensions					101 x 52 x 36 mm
Cable					AWG18, 1800mm, 8-way connector

EMI/EMC Standards

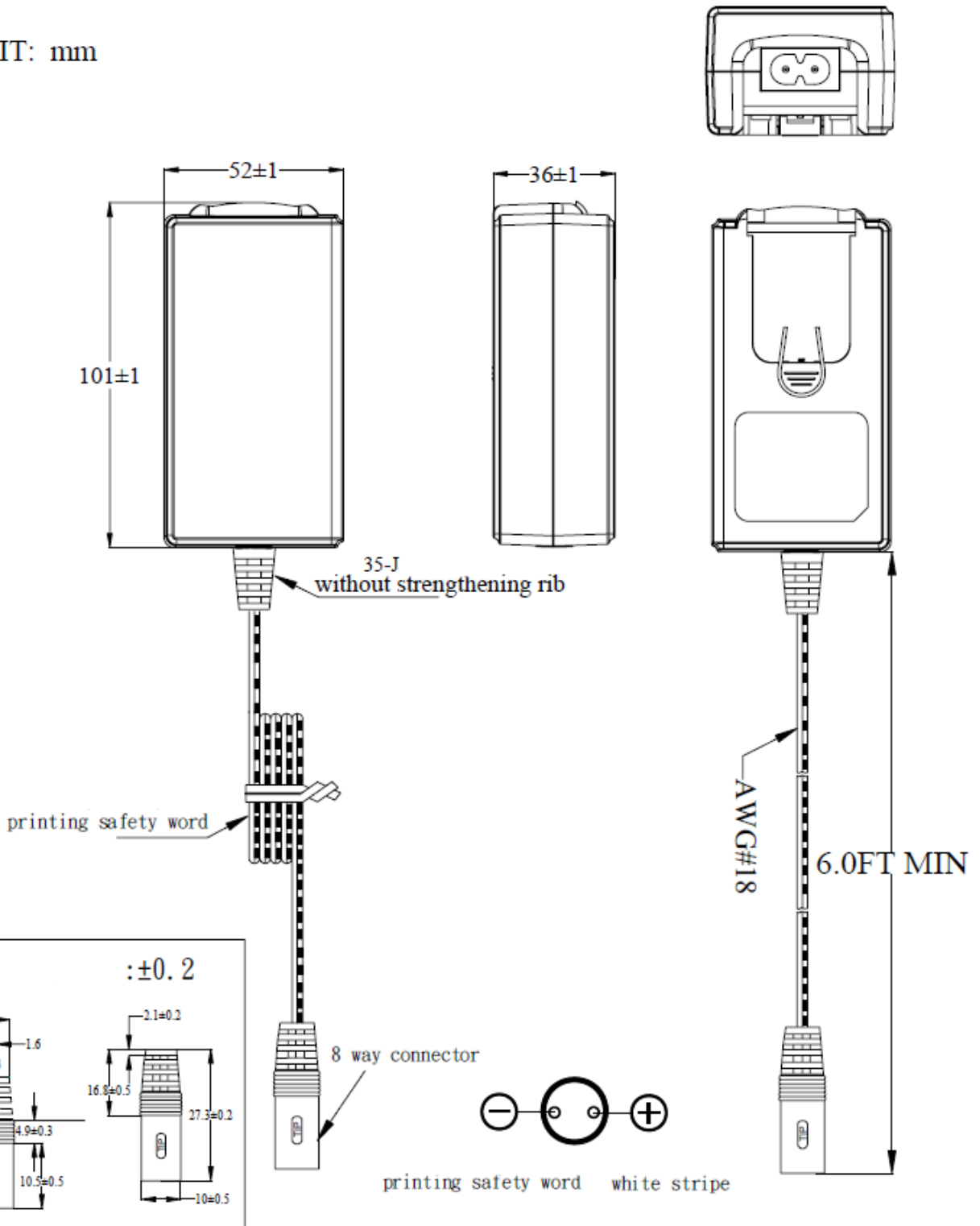
EMI/EMC	FCC PART 15B, AS/NZS 55022/55024, J55022(H22) (1) EN 55022 (EN 61000-3-2. EN 61000-3-3) (2) EN 55024 (IEC61000-4-2. IEC 61000-4-3. IEC 61000-4-4. IEC 61000-4-6. IEC 61000-4-8. IEC 61000-4-11.)
---------	---

Safety Approvals

	Safety Standards
Certifications	UKCA, CE, cULus, RCM (C-Tick), TUV-GS, FCC, RoHS
Approvals	UL60950-1 2nd Edition, 2007-03-27 CSA C22.2 NO.60950-1-07, 2nd Edition.2007-03, EN 60950-1:2006+A11+A1+A12 BS EN60950-1:2006+A1+A12, AS/NZS 60950.1:2011

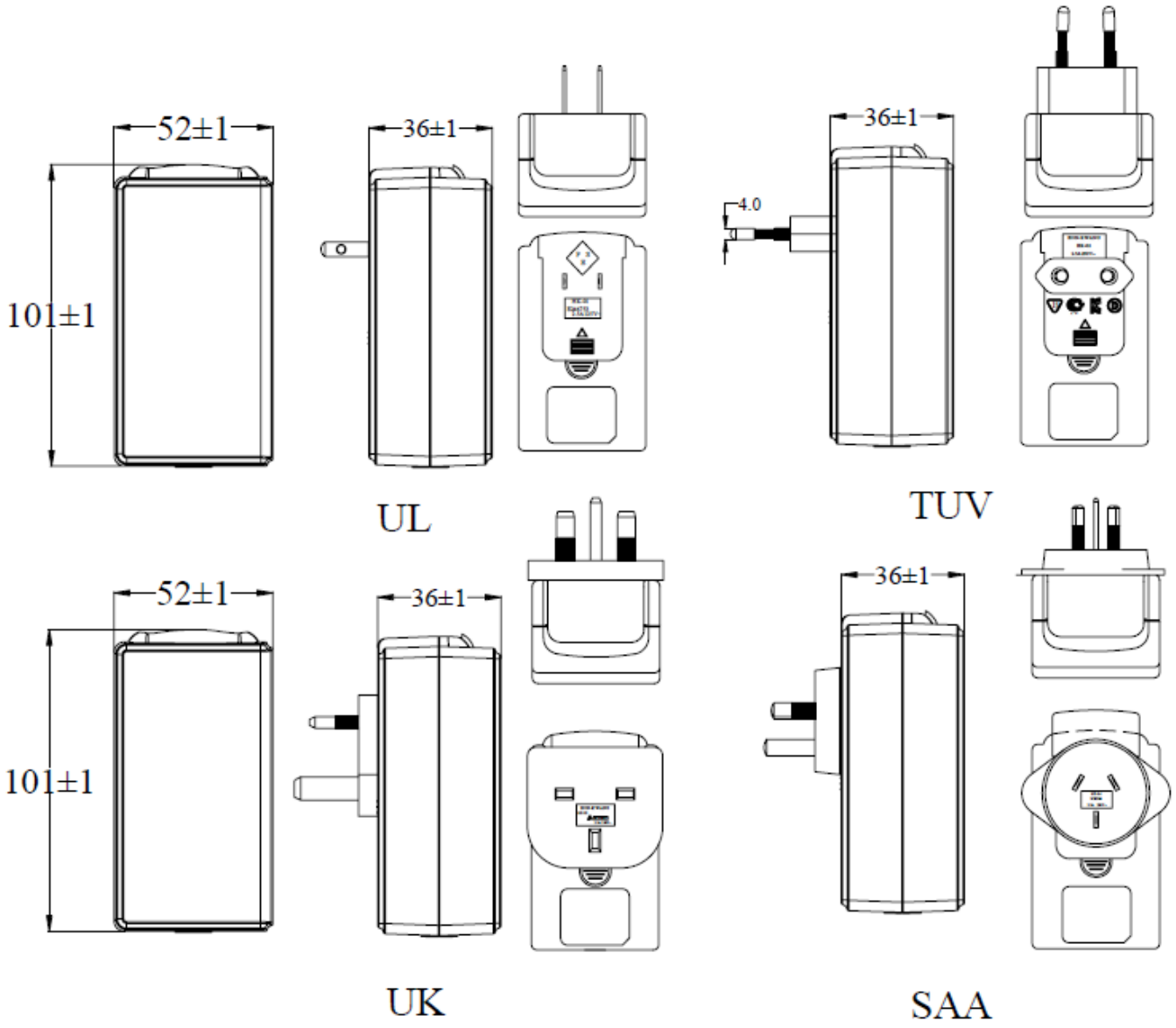
Mechanical Drawing

UNIT: mm



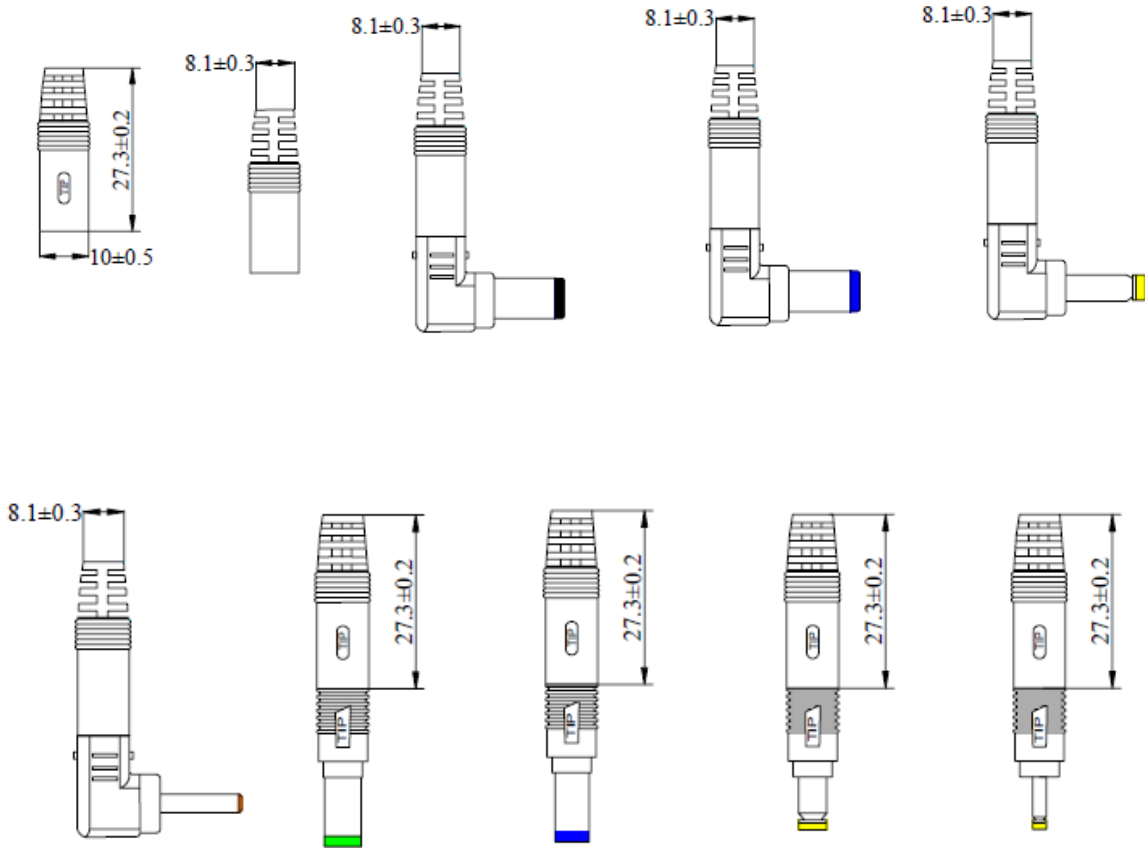
AC - DC

Mechanical Drawing (continued)

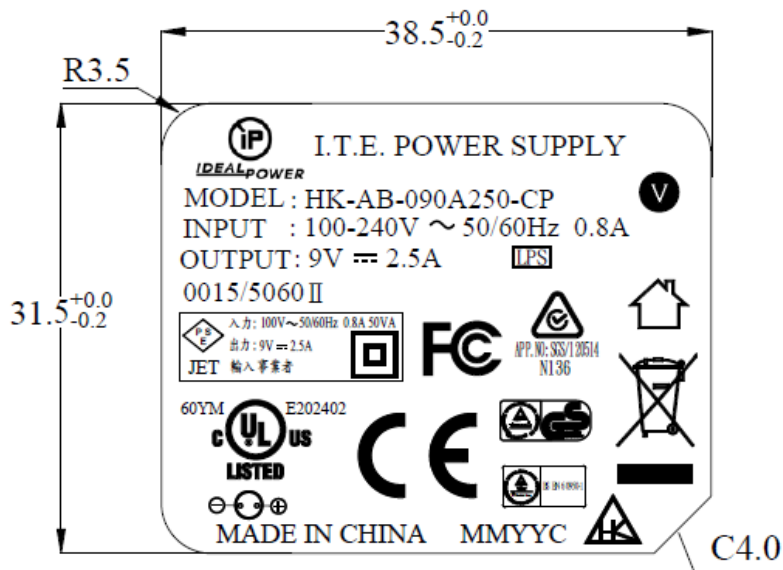


AC - DC

Connectors



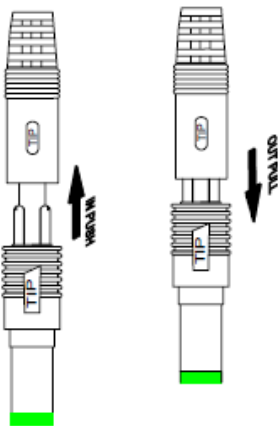
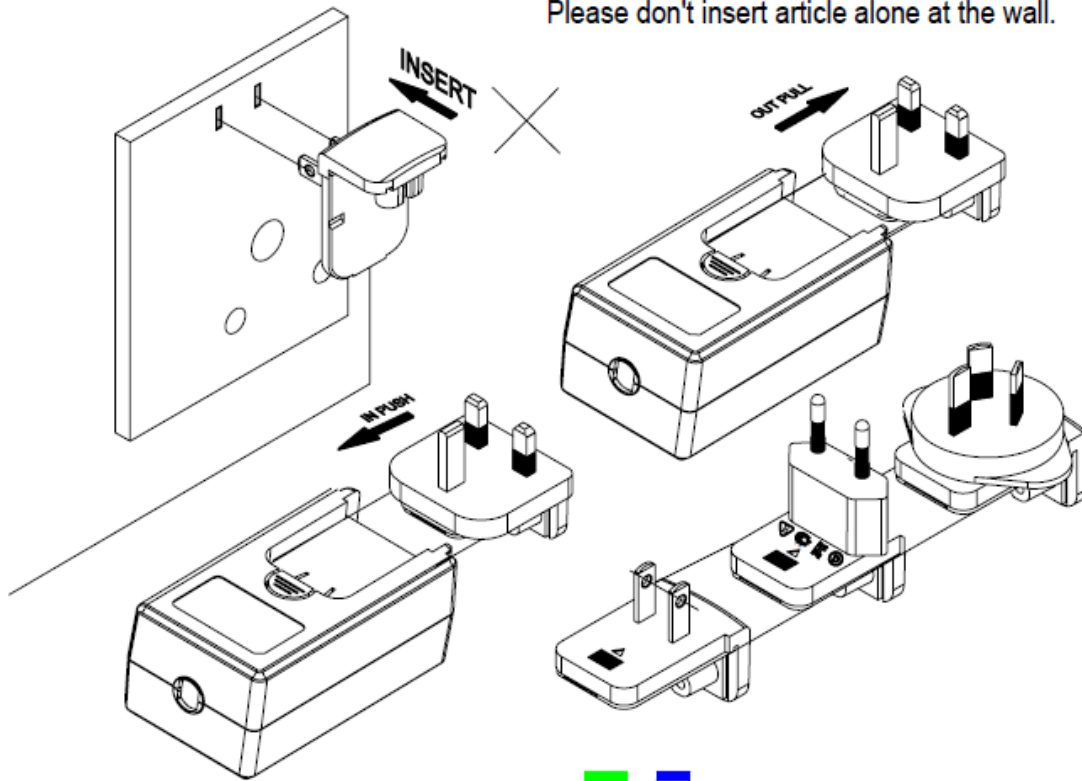
Typical Label Drawing



Use Specification

WARNING!

Please don't insert article alone at the wall.



Instruction manual card

